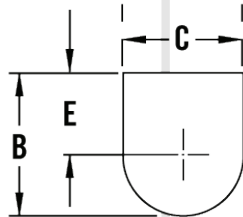
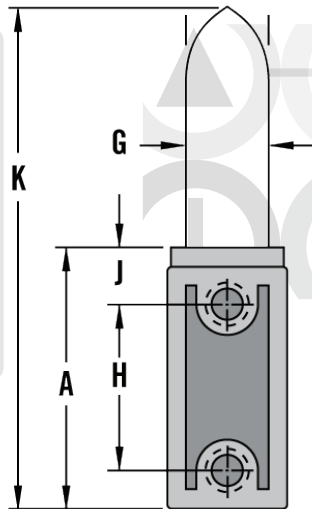
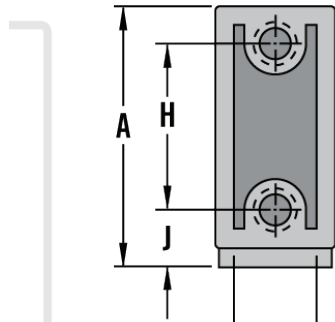
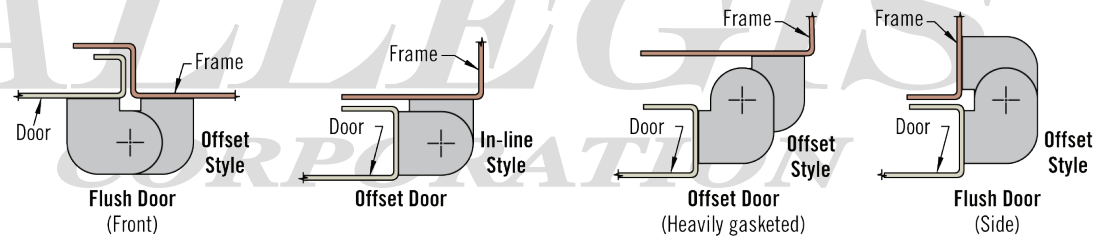


Screw Thread Size	Part Numbers			Dimensions								
	Series	Offset Knuckle Style		In-line Knuckle Style	A	B	C	D	E, F & G	H	J	K
		Type "A"	Type "B"									
M5	300	96-50-310-11	96-50-320-11	_____	31 (1.22")	16.7 (.66")	14.3 (.56")	21.5 (.84")	9.5 (.38")	19 (.75")	7 (.28")	58 (2.28")
10-24		96-10-310-11	96-10-320-11									
M6	400	96-50-410-11	96-50-420-11	96-50-400-11	41.3 (1.63")	22.2 (.88")	19 (.75")	28.5 (1.13")	12.7 (.50")	25.5 (1.00")	9.5 (.38")	78 (3.06")
1/2 -20		96-10-410-11	96-10-420-11	96-10-400-11								



ACTUAL SIZE

**Mounting variations**



[www.ALLEGISCORP.com](http://www.ALLEGISCORP.com)

1-866-378-7550

MATERIAL / FINISH :

Glass reinforced nylon w/ black finish

REV. :

1 : 1

DATE :

1-10-2013

DESCRIPTION :

In-Line Hinge

DRAWING NO. :

96-XX-400-11